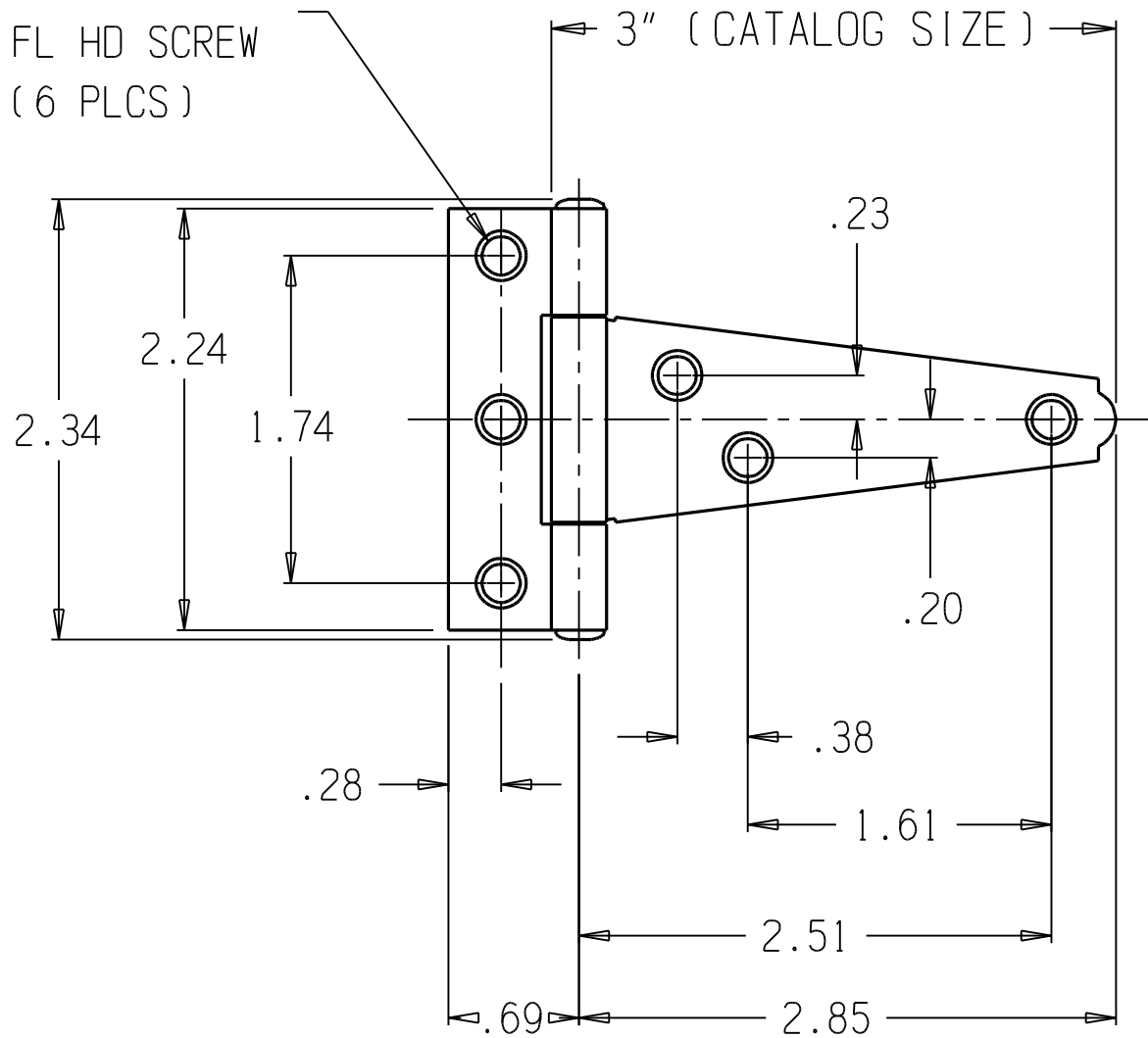


∅ .21 THRU  
 C' SNK FOR #6  
 FL HD SCREW  
 ( 6 PLCS )



Dimensions shown are nominal and  
 subject to change. For critical design  
 specification, contact [techinfo@natman.com](mailto:techinfo@natman.com)  
 2007 National Manufacturing Co.

MATERIAL: 0.056" NOMINAL  
 PIN DIA: 0.170"

NATIONAL 284 3" T-HINGE