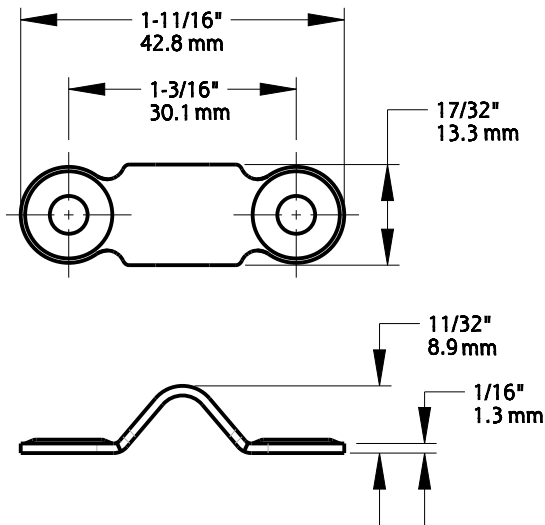


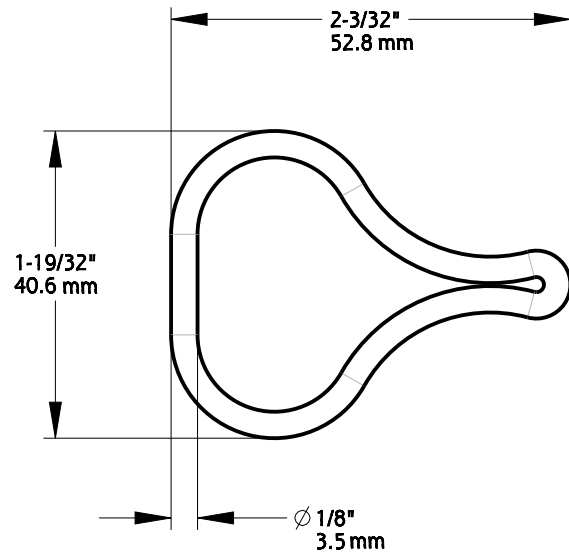
Material: Steel  
Finish: Zinc Plated  
Fasteners:

- (4) Tapping screw, Pan Head, #6 x 1", Type AB
- (2) Tapping screw, Flat Head, #6 x  $\frac{3}{4}"$ , Type AB

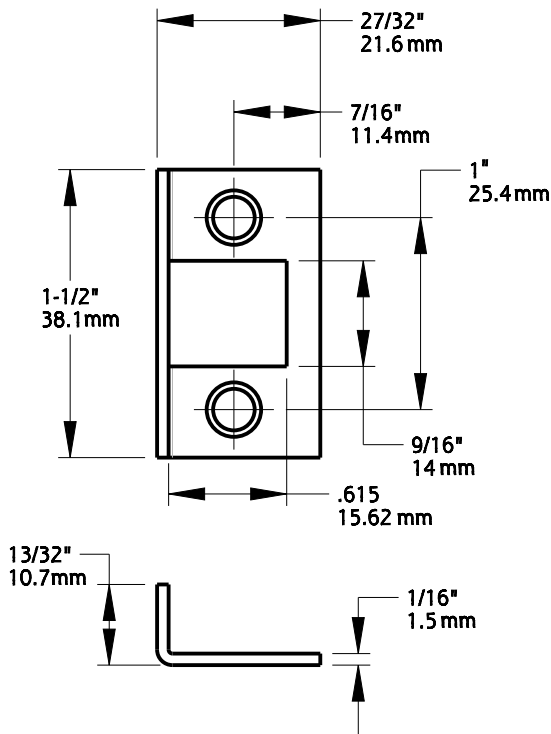
|   |   |   |  |
|---|---|---|--|
| <p>Revision</p> <p><b>1</b></p> <p><b>December 2017</b></p> <p>Date</p> | <p>DO NOT SCALE</p> <p>Dimensions are nominal and subject to change.</p> <p>©2017 Spectrum Brands, Inc.</p> | <p>Family Name</p> <p><b>MPB1055</b></p> <p>Description</p> | <p>SKU</p> <p><b>N236-336</b></p> <p><b>CHAIN BOLT, 4"</b></p> |
|---|---|---|--|



**GUIDE**



**PULL**

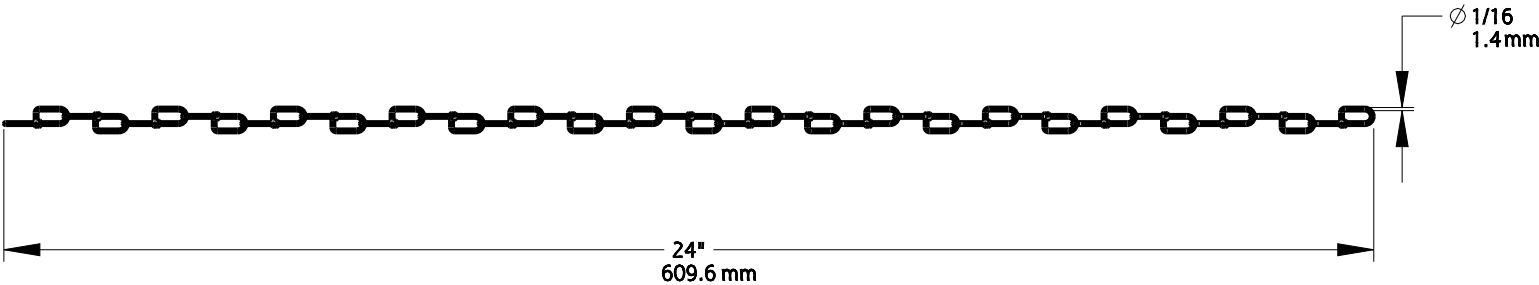


**MORTISE STRIKE**

Material: Steel  
Finish: Zinc Plated  
Fasteners:  
(2) Tapping screw, Flat Head, #6 x 3/4", Type AB

Page 2 of 3

|   |   |  |  |
|---|---|--|--|
| <div>Revision</div> <div>1</div> <div>December 2017</div> <div>Date</div> | <div>DO NOT SCALE</div> <div>Dimensions are nominal and subject to change.</div> <div>©2017 Spectrum Brands, Inc.</div> | <div>MPB1055</div> <div>Family Name</div> <div>Description</div> | <div>N236-336</div> <div>SKU</div> <div>CHAIN BOLT, 4"</div> |
|---|---|--|--|



CHAIN

Material: Steel  
Finish: Zinc Plated

|  |   |  |                                     |
|--|---|--|-------------------------------------|
| <div>Revision</div> <div>1</div>         | <div>DO NOT SCALE</div> <div>Dimensions are nominal and subject to change.</div> <div>©2017 Spectrum Brands, Inc.</div> | <div>Family Name</div> <div>MPB1055</div>        | <div>SKU</div> <div>See Table</div> |
| <div>Date</div> <div>December 2017</div> |   | <div>Description</div> <div>CHAIN BOLT, 4"</div> |                                     |